

◆ Cloud Technology User Instruction

Cloud technology make the device one step on Internet, greatly bring convenience for customer to monitor dvr's via Internet.

1: Pls connect the DVR to a router by network cable.

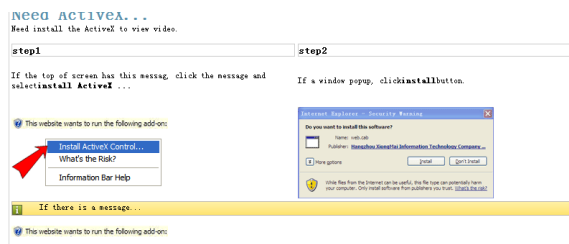
2: Download active X,check serial no.and modify dvr gateway ,IP address

(1)Login cloud service website: <http://xmeye.net>

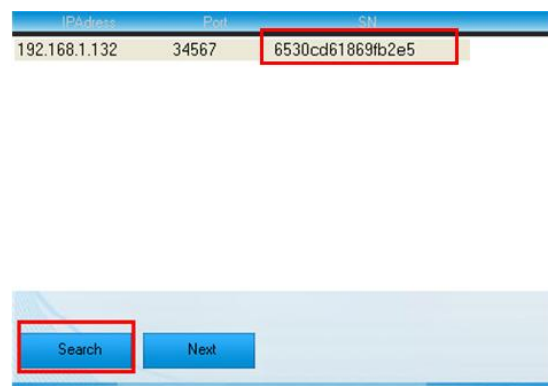


(2)Click **Enter Guide** and do it step by step according to guide.

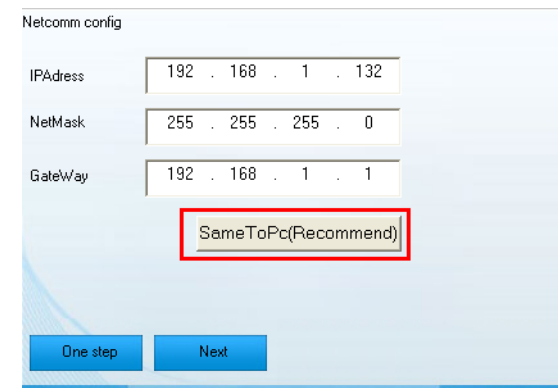
(3)Down and Install active X.



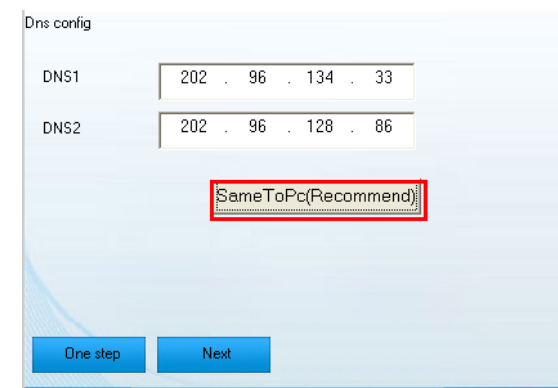
(4)Click“next”, search IP address, as below pic:



(6)Click“Next”, see pic as below and click “sameToPc(Recommend)”:

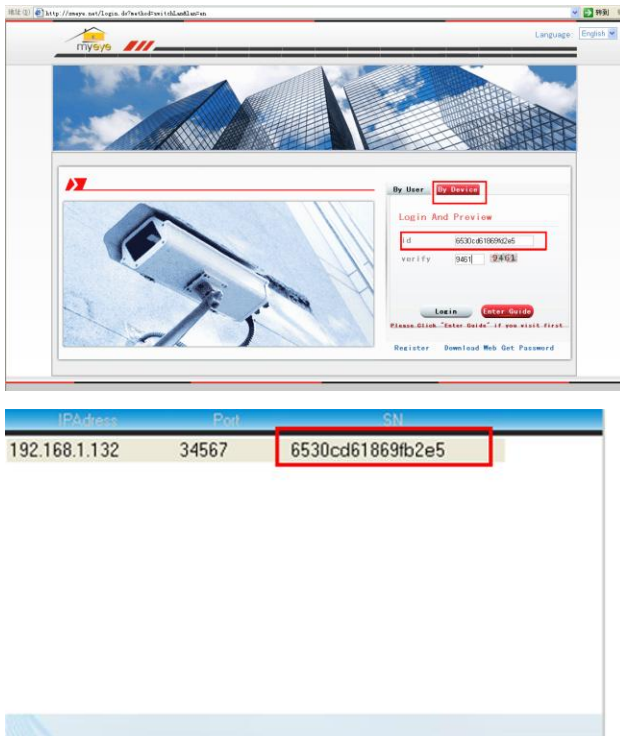


(7) Click“Next”,and then click “sameToPc(Recommend):



3: login by device

(1) open this website:<http://xmeye.net> and choose“by device”, enter the serial no. of device (which you have searched before or it can find out serial no from DVR version,,go to MainMenu->Info->Version)



Click by Device and put the **Seral No.** and **Vernify number** then click log in to check the DVR online.

4: Log in by user

Customers can log in both by Device and by User but if it is the first time to log in by User you need to register a username and password on the website.

➤ 1: Register

(1) Login cloud service website:

<http://xmeye.net>, click By User and Register.

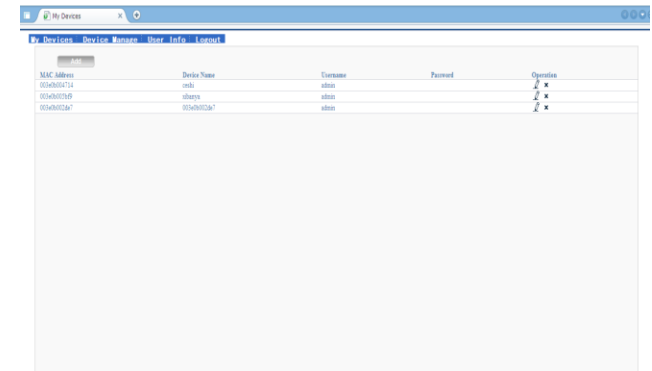


(2) After register pls log in by your username and password.



(3) After login, pls click "add device" to add more

devices.



(4) Enter "my devices" interface, and double click device name, then you can check dvr online.



If you still have any question about could technology, please feel free to

contact your supplier.Thank you.

◆ Cloud Login by Mobile Phones Instruction

Download and install application vMEyeCloud on your mobile phones,so far it support only Android and iPhone, shown in Figure 2.1; Click the APP, shown in Figure 2.2;



Figure 2.1



Figure 2.2



Figure 2.3



Figure 2.4


2.1 Login by Ueser Name


1. Shown in Figure 2.3 by user login

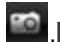
User Name: please log in <http://xmeye.net/> website and register the user name.


Password: please log in <http://xmeye.net/> website and register the password.


2. Click the landing, the client interface shown in Figure 2.4

3. Click , you can change setup of devices after login by user name shown in Figure 2.5

Click ,The current preview screen to start and stop,

Click ,Local capturing on the current preview screen,

Click , local recording on the current video preview,

Click , to view the current alarm information in the preview screen,

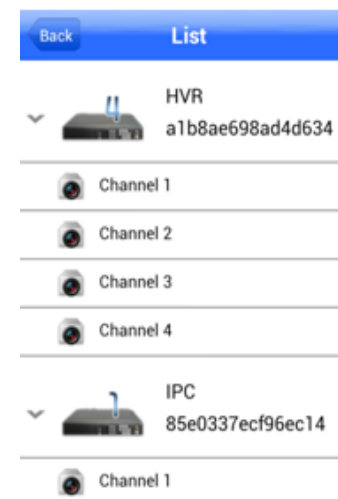


Figure 2.5



Figure 2.6




Figure 2.7

2.2 Login by Device Serial Number

1. Click by Device as shown in Figure 2.2 then you see Figure 2.7:

Device Name: set by user

Serial Number: in the [Menu]>[Info]>

[Version] or in the IE [DeviceCfg]>[

User Name: the device user name, default is admin

Password: the device password, the default password is empty

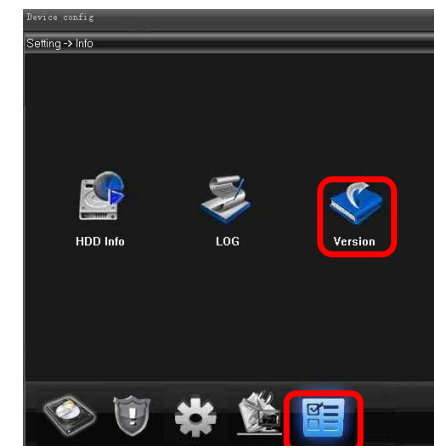


Figure 2.8

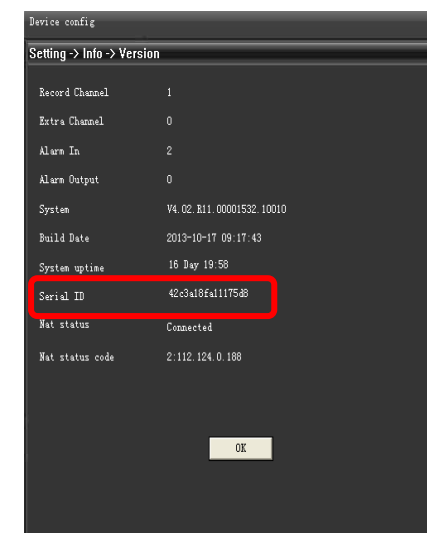


Figure 2.9